

SERIE DUNA | DUNA SERIES



natural
unglazed



<1,25%
máx. 2 mm



3-<E≤6%



3,7x10⁶x C⁻¹



18 N/mm²



<393 mm³



6



clase 3 a 5
class 3 to 5



Deslizam. CTE: clase 3
Slipping resist. CTE: class 3



B

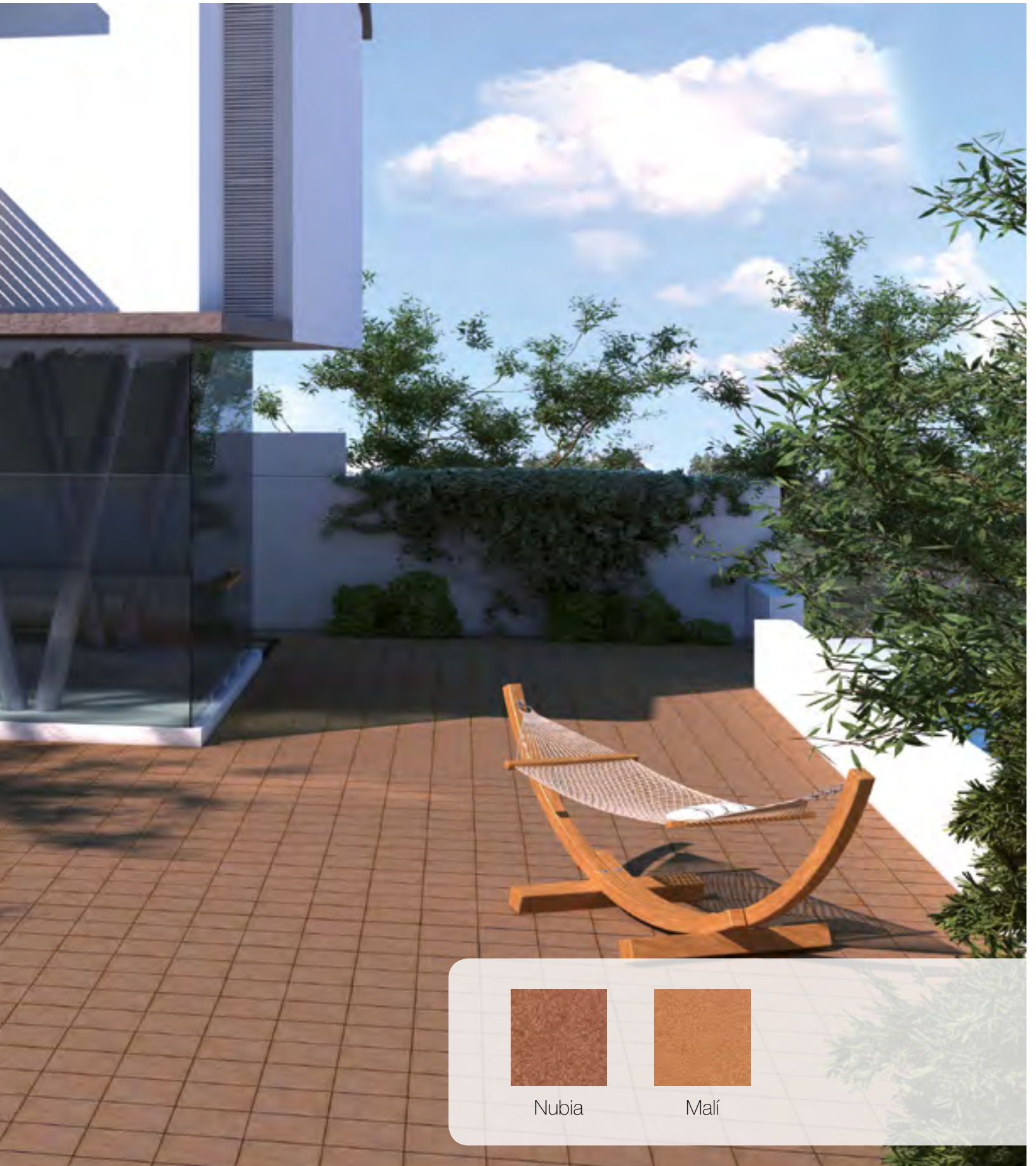


R11

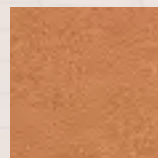
extrusión
EXTRUSION



Simbología y normas en pág. 183 Symbols and Standards p. 183
Los colores son indicativos Colours are just indicative



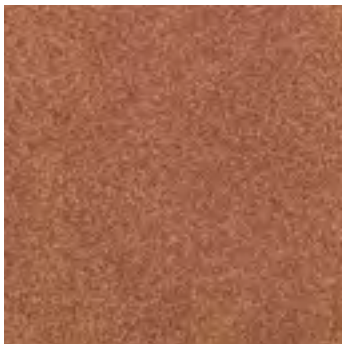
Nubia



Malí

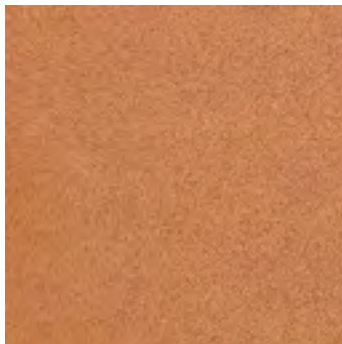
SERIE DUNA | DUNA SERIES

Bases Basic pieces



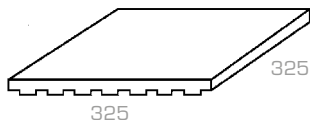
Nubia 33x33
Cod. 01241

MC625

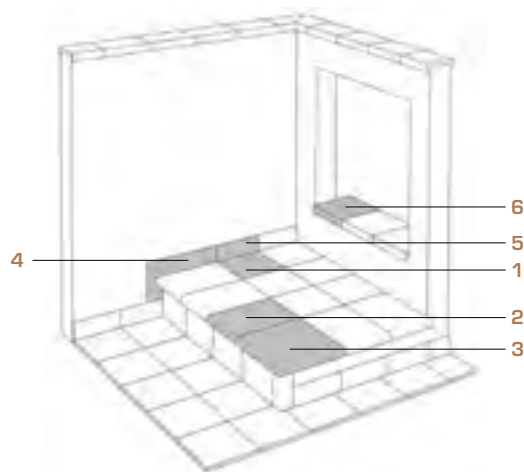


Malí 33x33
Cod. 01251

MC625



Base 33x33
Tile 33x33



- | | | | |
|----------------------|--------------------|---------------|----------------|
| 1 Base | Tile | 4 Zanquín | String |
| 2 Peldaño | Stair-tread | 5 Rodapié | Skirting board |
| 3 Esquina de peldaño | Stair-tread corner | 6 Vierteaguas | Wash |

Artículo Item	Medidas (mm) Size (mm)	Espesor (mm) Thickness (mm)	U.M.*	U.M.*		Piezas Pieces		Peso (Kg) Weight (Kg)		
				U.M.*	U.M.*	U.M.*	U.M.*	U.M.*	U.M.*	
Base 33x33 Tile 33x33	325x325	16	M ² SQM	0,67	42,67	9	6	33	21,8	1400

* Unidad de Medida. Los artículos medidos en M² o ML se sirven contando la junta normal entre piezas
*Unit of measure. Items measured in SQM or LM are delivered assuming average joint between pieces



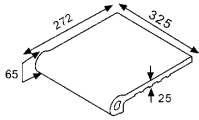
Mali 33x33

Remate
Edge



Nubia ■
Cod. 01248
PZ455

Mali ■
Cod. 01258
PZ455

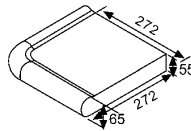


Remate esq. ext.
External corner



Nubia ■
Cod. 01250
PZ675

Mali ■
Cod. 01260
PZ675

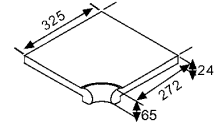


Remate esq. int.
Internal corner



Nubia ■
Cod. 01249
PZ670

Mali ■
Cod. 01259
PZ670

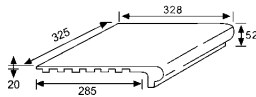


Peldaño ref. 24-33
Stair-tread ref. 24-33



Nubia ■
Cod. 01242
PZ390

Mali ■
Cod. 01252
PZ390

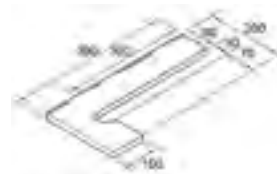


Zanquín izda.
String left side



Nubia ■
Cod. 01246
PZ190

Mali ■
Cod. 01256
PZ190



Zanquín dcha.
String right side



Nubia ■
Cod. 01245
PZ190

Mali ■
Cod. 01255
PZ190

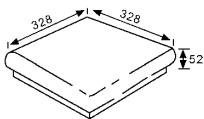


Esquina de peldaño
Stair-tread corner



Nubia ■
Cod. 01244
PZ640

Mali ■
Cod. 01254
PZ640

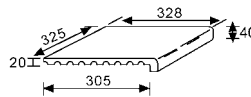


Vierteaguas 33x33
Wash 33x33



Nubia ■
Cod. 01247
PZ345

Mali ■
Cod. 01257
PZ345

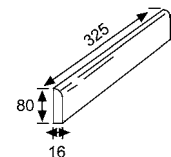


Rodapié 33
Skirting board 33



Nubia ■
Cod. 01243
ML190








Mali ■
Cod. 01253
ML190



Anchura recomendada de la junta de colocación: 6 - 8 mm
A 6 - 8 mm wide installation joint is recommended.



Nubia 33x33

Artículo Item	Medidas (mm) Size (mm)	Espesor (mm) Thickness (mm)	U.M.*	U.M.*		Piezas Pieces		Peso (Kg) Weight (Kg)		
						U.M.* 	U.M.* 	U.M.* 		
Peldaño ref. 24-33 <i>Stair-tread ref. 24-33</i>	325x328x52	20	Pz. Pc.	6	216	1	6	4,2	25,1	906
Vierteaguas 33x33 <i>Wash 33x33</i>	325x328x40	20	Pz. Pc.	6	216	1	6	4,6	28	1020
Esquina de peldaño ref. 24 <i>Stair-tread corner ref. 24</i>	328x328x52	20	Pz. Pc.	2	72	1	2	5,3	10,6	400
Zanquín izda. <i>String left</i>	390x80/200x100	16	Pz. Pc.	10	300	1	10	1,3	13	390
Zanquín dcha. <i>String right</i>	390x80/200x100	16	Pz. Pc.	10	300	1	10	1,3	13	390
Rodapié 33 <i>Skirting board 33</i>	325x80	16	ML LM	8	576	3	24	2,3	18	1296
Remate <i>Edge</i>	325x272x65	25	Pz. Pc.	4	168	1	4	5	19,8	832
Remate esq. ext. <i>External corner</i>	272x272x65	55	Pz. Pc.	2	56	1	2	6,3	12,6	454
Remate esq. int. <i>Internal corner</i>	325x272x65	24	Pz. Pc.	2	72	1	2	7,4	14,8	532,8

*Unidad de Medida. Los artículos medidos en M² o ML se sirven contando la junta normal entre piezas
 *Unit of measure. Items measured in SQM or LM are delivered assuming average joint between pieces